

GERMAN ENGINEERED INNOVATIONS

DESIGNED BY WERNER NICKEL



TL

DESIGN

This “face balanced” putter design offers two lateral stainless steel counterweights that extend from the back side of the precision high-strength aluminum body. This showcases the complexity of combining different materials with unequal densities into one seamless unit.

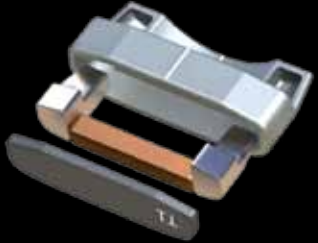


With the very first putt, this “High Performance Putter” from our Two-Metal-Series proves convincingly why it is one of the world’s best: It provides golfers high MOI (Moment of Inertia) and stability in the follow-through. Also, the clear continuous aim line provides a feeling of confidence in the address position.



CONSTRUCTION

Only the most up-to-date CNC milling technology can seamlessly bring two different metals together. With the Two-Metal 909, the stainless steel inserts are precisely pressed inside the aluminum body, thus eliminating vibration and other deficiencies of design.



TECHNICAL SPECIFICATIONS

Head Weight: 350g
Loft Angle: 3°
Lie Angle: 70°

MATERIALS

Insert: Polymer
Head: Hardened Surface-Coated Aluminum
Counterweights: Stainless steel
Shaft: Stainless steel with chrome-plated brushed finish

FEATURES & ACCESSORIES

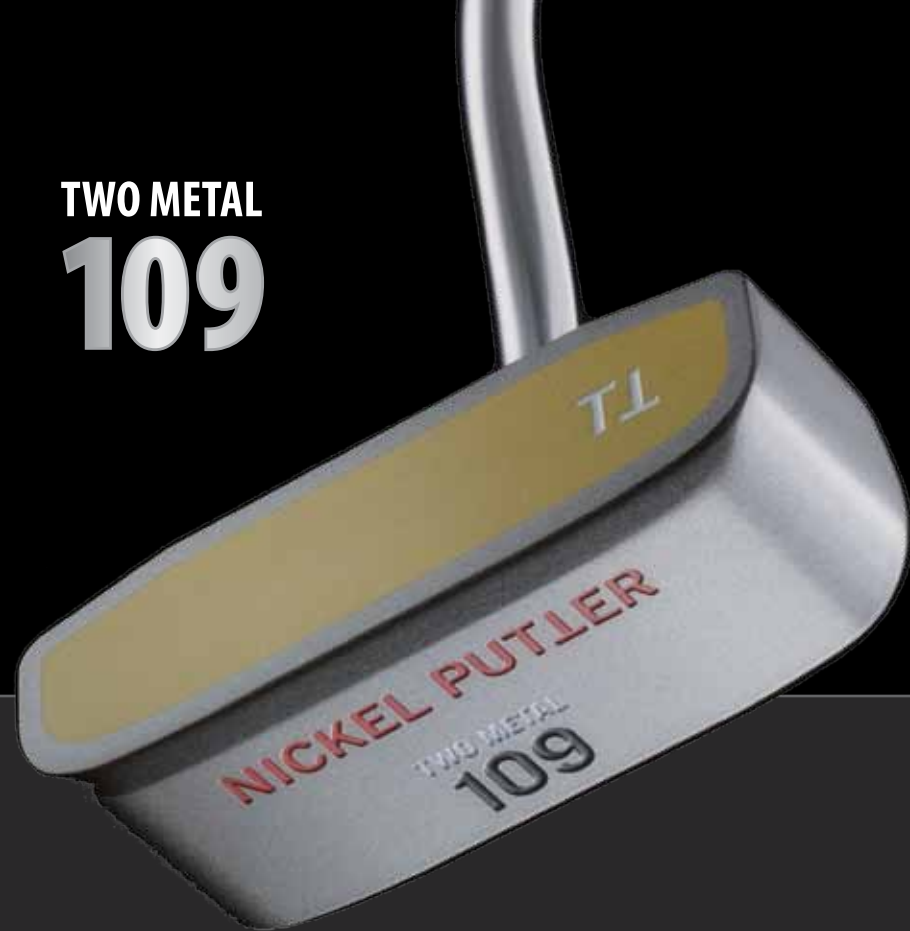
- Adjustable Length Shafts (Adjustable Grips)
- TORX-T25 Wrench - For additional grip adjustment
- Head Cover

TWO METAL
909



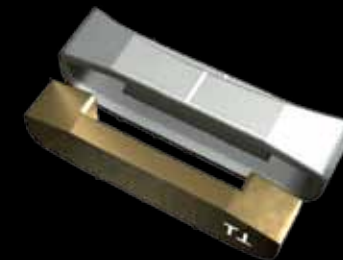
★ ★ ★ ★ ★
5 STARS HIGHEST RATING
GOLF TEST USA SEAL OF EXCELLENCE

TWO METAL 109



DESIGN

This "High Performance Blade Putter" from our Two-Metal Series stands out with its high MOI (Moment of Inertia) and high swing stability in the follow-through. The putter head is "face balanced" and utilizes a special brass alloy insert to concentrate weight in the club's heel and toe.



CONSTRUCTION

The construction of the Two-Metal 109's head shifts weight to the outer edges of the putter, near the club face. This is the result of horseshoe-shaped weight structure made of brass, which also builds the insert.

TECHNICAL SPECIFICATIONS

Head Weight: 350g

Loft Angle: 3°

Lie Angle: 70°

MATERIALS

Insert: Brass Alloy

Head: Hardened Surface-Coated Aluminum

Counterweights: Brass Alloy

Shaft: Stainless steel with chrome-plated brushed finish

FEATURES & ACCESSORIES

- Adjustable Length Shafts (Adjustable Grips)
- TORX-T25 Wrench - For additional grip adjustment
- Head Cover

DESIGN

This is a modification to the existing Two-Metal 109 for golfers who prefer softer contact with the ball without compromising superb response at the moment of impact. The putter head is “face balanced” and utilizes a special horseshoe-shaped brass alloy insert to concentrate weight in the club’s heel and toe.

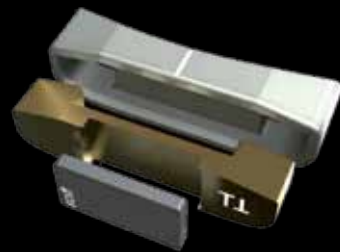


This “High Performance Blade Putter” from our Two-Metal Series stands out with its high MOI (Moment of Inertia) and high swing stability in the follow-through.



CONSTRUCTION

With the aid of modern CNC technology, a section of the existing brass insert is milled out in a precise manner. The milled-out area is then replaced with a “soft” liquid polymer, creating a seamless bond with the brass insert.



TECHNICAL SPECIFICATIONS

Head Weight: 335g

Loft Angle: 3°

Lie Angle: 70°

MATERIALS

Insert: Polymer/Brass Alloy

Head: Hardened Surface-Coated Aluminum

Counterweights: Brass Alloy

Shaft: Stainless steel with chrome-plated brushed finish

FEATURES & ACCESSORIES

- Adjustable Length Shafts (Adjustable Grips)
- TORX-T25 Wrench - For additional grip adjustment
- Head Cover

TWO METAL 109 *Soft*



NICKEL PUTTER No 1 Pro



★ ★ ★ ★ ★
5 STARS HIGHEST RATING
GOLF TEST USA SEAL OF EXCELLENCE

DESIGN

Werner Nickel's original high precision "face balanced" mallet head putter, the Nickel Putter No 1 Pro (USGA approved without the attachable ball marking mechanism), is enhanced by two lateral embedded CNC milled lead counterweights, ensuring high swing stability.



CONSTRUCTION

The club's head is specifically constructed to transfer much of the internal weight to the outside edges (just behind the putting surface) with the use of two lateral embedded weights. This enhances swing stability by limiting the negative torsion effect, producing a composed swing motion in the follow-through.



TECHNICAL SPECIFICATIONS

Head Weight: 350g

Loft Angle: 3°

Lie Angle: 70°

MATERIALS

Insert: Polymer

Head: Surface-Coated Aluminum

Counterweights: Lead

Shaft: Stainless steel with chrome-plated brushed finish

FEATURES & ACCESSORIES

- Adjustable Length Shafts (Adjustable Grips)
- TORX-T25 Wrench - For additional grip adjustment
- Head Cover

PATENTED BALL MARKING FUNCTION

If desirable, you can also purchase the Nickel Putter No.1 with our patented ball attachable marking mechanism. What does this mean to you? No more straining while bending over on the green. The mechanism is simple to attach and just as easily removed. The No.1 is USGA approved without this marking system.

ATTACHABLE BALL MARKING MECHANISM

Weight: 12g

Material: Durable synthetic material designed to hold its form

Markers: Made of magnetized stainless steel and are held in position by a magnet integrated into the putter head of the No.1.

Important Note: Do not bring magnets into close contact with objects that react sensitively to magnetism. Keep magnets away from pacemakers.



NICKEL PUTTER No.1



★ ★ ★ ★ ★
5 STARS HIGHEST RATING
GOLF TEST USA SEAL OF EXCELLENCE



BALL PICK-UP

GERMAN ENGINEERED

The Nickel Putter Ball Pick-Up is the most advanced ball pick-up ever developed. The patented design allows golfers to retrieve the golf ball quickly and securely out of the cup without bending over.

Get rid of those annoying suction cups and move up to a far superior German engineered technology.

SIMPLE TO USE, EASY TO INSTALL

- Attaches easily to any putter grip
- Spring-loaded design opens with single thumb motion
- Stress-tested over 200,000 times (durable)
- Now your putter will fit back in your bag, in any size sleeve.
- Discreet—you won't even know it's there...

TECHNICAL SPECIFICATIONS

Material: Specially developed wear-resistant polyester

Weight: 10 grams (0.4 ounces)

Dimensions: Dimensions:

Height: 15 mm (0.59 inch)

Length: 30 mm (1.18 inch)

Width: 20 mm (0.78 inch)

Color: Frosted Black

Mounting/Installation: The Ball Pick-Up is accompanied with three self-tapping screws to securely install the device to the end of any putter grip.

ADJUSTABLE GRIPS

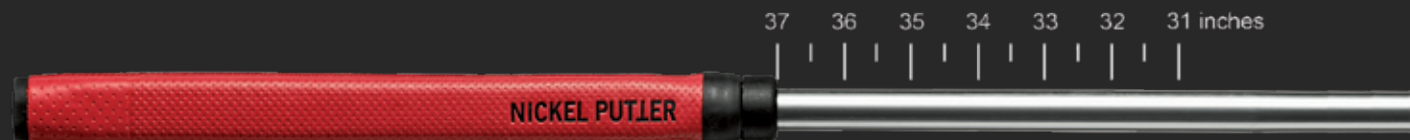
A World First: Infinitely Adjustable Grip:

All NICKEL PUTTERS are equipped with adjustable length shafts (adjustable grips) that adjust to any incremental length between 32" - 37". Not only is the length adjustable, you can also make rotational adjustments of the grip to correct for frequently missed putts in one direction of the target.

The flexibility of longitudinal and rotational adjustments of the grip allows for the ultimate customized fit. This uniquely individualized grip adjustment/setting will give you even more security and confidence when putting. Please contact your local golf Pro or Pro Shop for proper assistance with fitting.

Colors: Grips are available in seven different colors and are easily interchangeable to fit your preference. Purchase multiple colors by shopping online or at your local Nickel Putter retailer.

R&A: The length adjustable grip is certified and approved by The R&A St. Andrews (Scotland).



ADJUSTABLE GRIPS

NICKEL PUTTER - USA

SHOP ONLINE: WWW.NICKELPUTTER-USA.COM
EMAIL: INFO@NICKELPUTTER-USA.COM

NICKEL PUTTER - USA • CHICAGO, IL
ORDER BY PHONE: 312-337-7888